

Control Rice Root-Knot Nematode Disease by Waterflooding

Harmful and Distribution



symptom



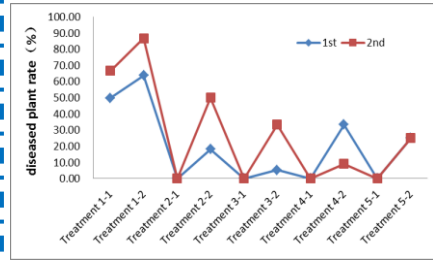
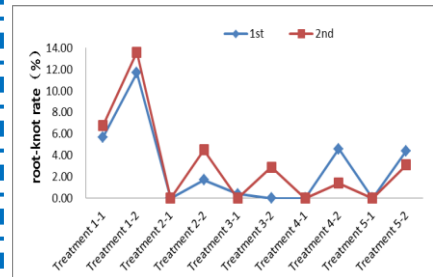
100 μm



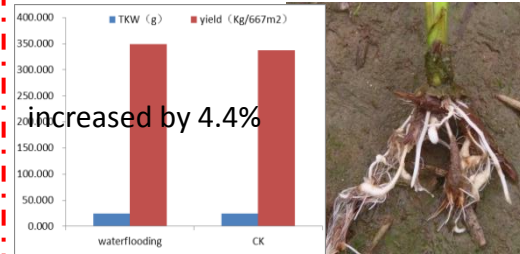
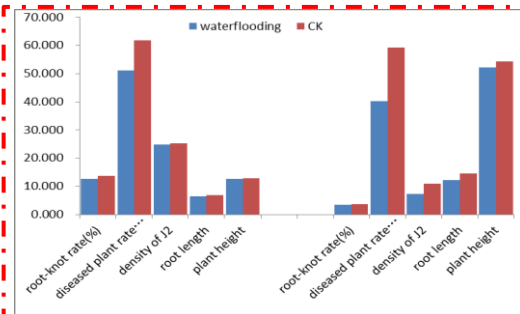
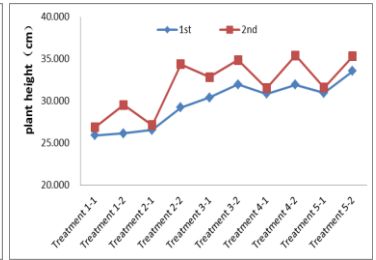
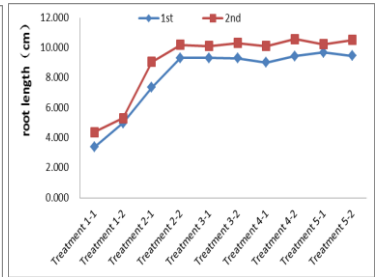
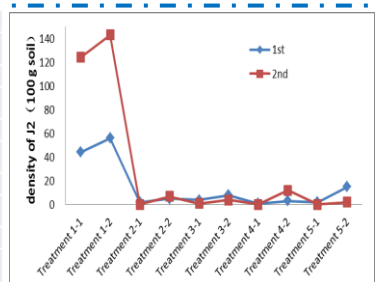
Distribution in China

Control by waterflooding

- Treatment 1-1 Keep fields moist
- Treatment 1-2 Keep fields moist and dry for 7 days at late tillering stage
- Treatment 2-1 waterflooding(2 cm depth)
- Treatment 2-2 waterflooding(2 cm depth) and dry for 7 days at late tillering stage
- Treatment 3-1 waterflooding(4 cm depth)
- Treatment 3-2 waterflooding(4 cm depth) and dry for 7 days at late tillering stage
- Treatment 4-1 waterflooding(6 cm depth)
- Treatment 4-2 waterflooding(6 cm depth) and dry for 7 days at late tillering stage
- Treatment 5-1 waterflooding(8 cm depth)
- Treatment 5-2 waterflooding(8 cm depth) and dry for 7 days at late tillering stage



Greenhouse pot experimen



increased by 4.4%



Field trial